

INSTALLATION INSTRUCTIONS

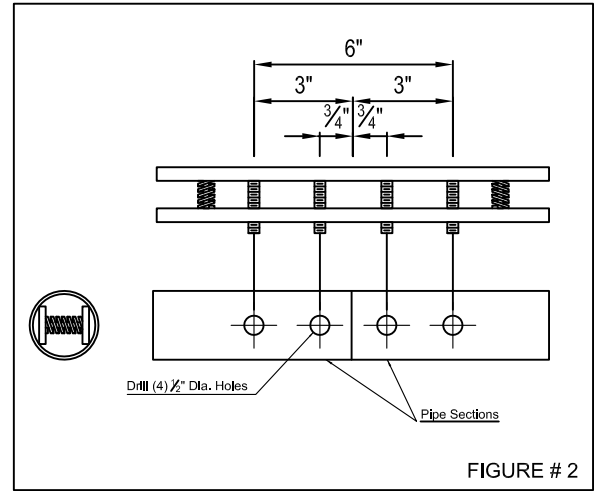
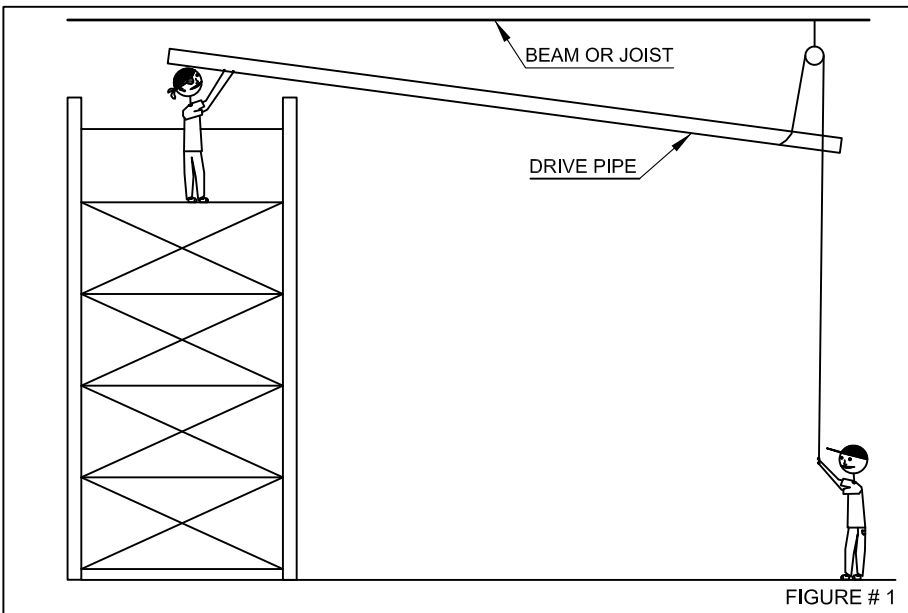
MODEL IP860 MULTI-SPORT PRACTICE CAGE

These instructions are intended to be a guide only. They do not imply any responsibility of IPI by Bison for improper installation or faulty workmanship at the jobsite.

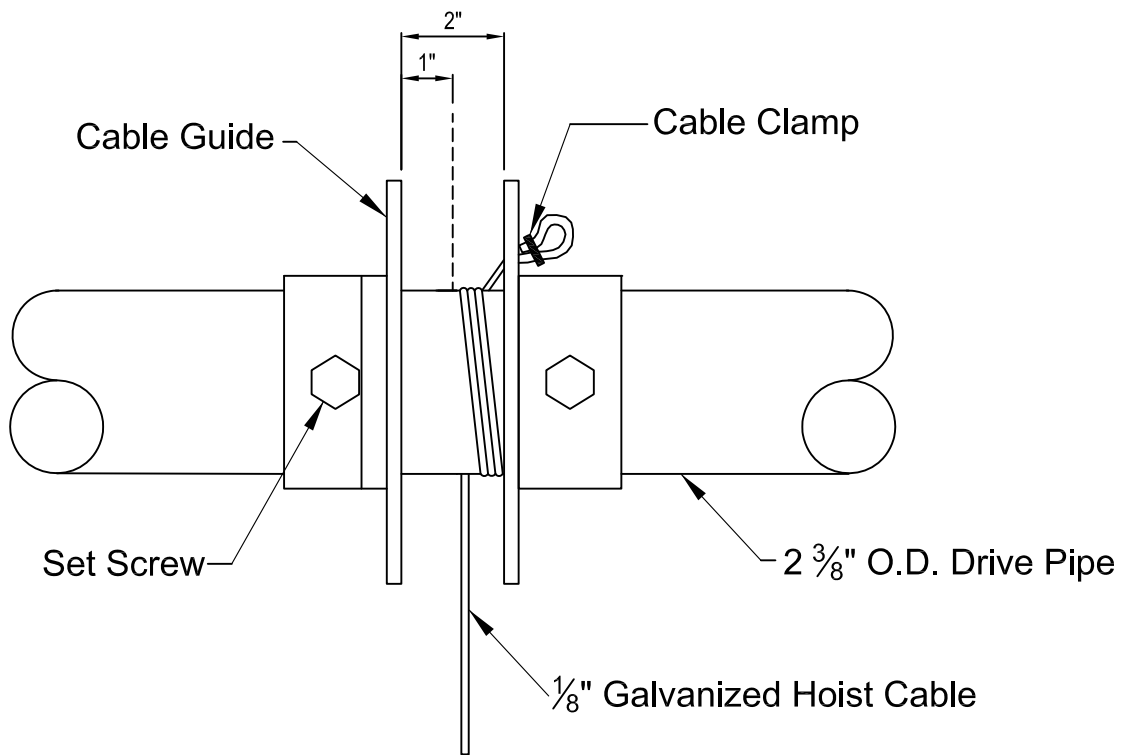
1. Identify all parts with the packing slip and shop drawings.
2. Install motor unit at the location shown on the shop drawings.
3. Start at the motor unit, install cradles that support the first section of the drive pipe. Raise the pipe section into place (see Figure 1). Slide the belt guides, that form the spool flange assembly, on this section, and move them into location shown on the shop drawings. Attach drive pipe to the flex-coupling of motor reducer and level pipe section.
4. Repeat the procedure for each additional drive pipe section. Use the drive pipe splicers to join each pipe section as shown in Figure 2.
5. When the above has been completed and drive pipe is level, test run drive pipe orientation.
6. Attach the chain to each spool flange assembly as shown in Figure 3-A, and let the other end hang to the floor.
7. Assemble the batting cage frame with batten pipe splicers, elbow fittings and tee fittings, pre the layout included in your shop drawings (see Figure 4). Do not tighten the set screws on your elbows or tees until the frame has been checked for square and adjusted.
8. Attach the short chains to the eyebolts, installed through the cross pipes, on one end and the 2" "O" ring on the other end (see Figure 5).
9. Attach the hoist cable from the drive pipe to the 2" "O" ring, raising the "O" ring as high as possible without lifting the pipe frame off the floor.
10. Raise the frame to a comfortable height to install the netting with the included plastic ties. Attach the netting to the pipe frame at a sufficient spacing to eliminate major sags in the netting.
11. Set the limit switch for up and down travel of the curtain (see attached instructions)
12. To store the batting/golf cage when not in use, toss the sides and ends of the cage up over the pipe frame and raise complete assembly to the ceiling.



800-637-7968



SPOOL FLANGE ASSEMBLY

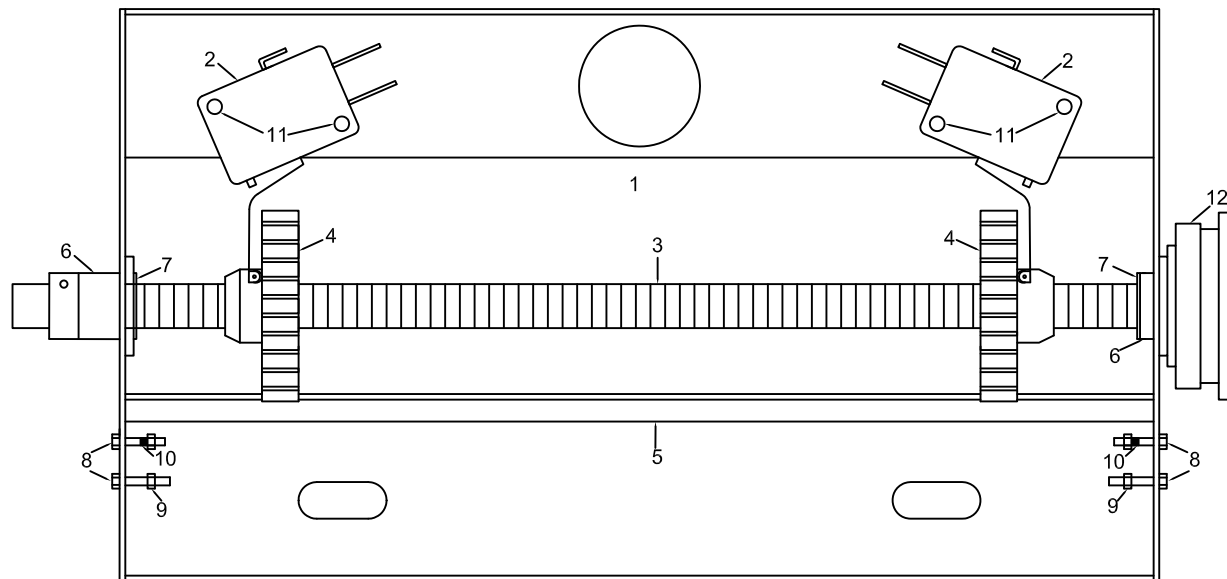


1. Cable guides are to be spaced as shown on shop drawings in relation to hoist line location.
2. The same number of pre-wrap turns must be maintained for all hoist lines.
3. Re-Alignment of cable guides may be required after the batting cage has been raised.
4. To increase the amount of cable take-up on a given spool assembly, you must decrease the 2" dimension between the cable guides. To decrease the amount of cable take-up, you must increase the distance between the cable guides.

FIGURE # 3

ROTARY LIMIT SWITCH CONTROL

ITEM NO.	PART NO.	DESCRIPTION	NO. REQ'D
1		CONTROL BOX	1
2	V3L-11-1DB	LIMIT SWITCHES	2
3		BRASS DRIVE ROD	1
4	MD-030-202	SPUR GEARS	2
5		GEAR RETAINER BAR	1
6		BRONZE BUSHINGS	2
7	FB-58	$\frac{5}{16}$ " I.D. X $\frac{1}{2}$ " O.D. X $\frac{1}{16}$ " WASHER	2
8		4-40 X $\frac{1}{2}$ " SOCKET HEAD M.S.	4
9		4-40 HEX NUT WITH NYLON INSERT	4
10	T-025-180-140-L & R	TORSION SPRINGS	1 OF EA.
11		4-40 X $\frac{5}{8}$ " SOCKET HEAD M.S.	4
12		SPROCKET - IPDC975 or COUPLER - IPBA975	1



INSTRUCTIONS

Upper and lower limits are set by locating the traveling spur gears on the brass drive rod (item no. 3). The limit switch with the red connecting wire is normally set for the raised position of the curtain. Pink wires are for the lower position.

To set, push the gear retainer bar (item no. 5) back to release the traveling spur gears. Set the gears (item no. 4) towards the center to allow sufficient travel. With the curtain in the raised position, set the upper spur gear (red wire leads) to contact and close the limit switch. Release the retainer bar to lock the spur gears and lower the curtain. Repeat procedure for setting the lower spur gear (pink wire leads).

After setting both positions make sure the gear retainer bar is fully locking the traveling spur gears. Raise and lower the curtain through a complete cycle to check proper settings.

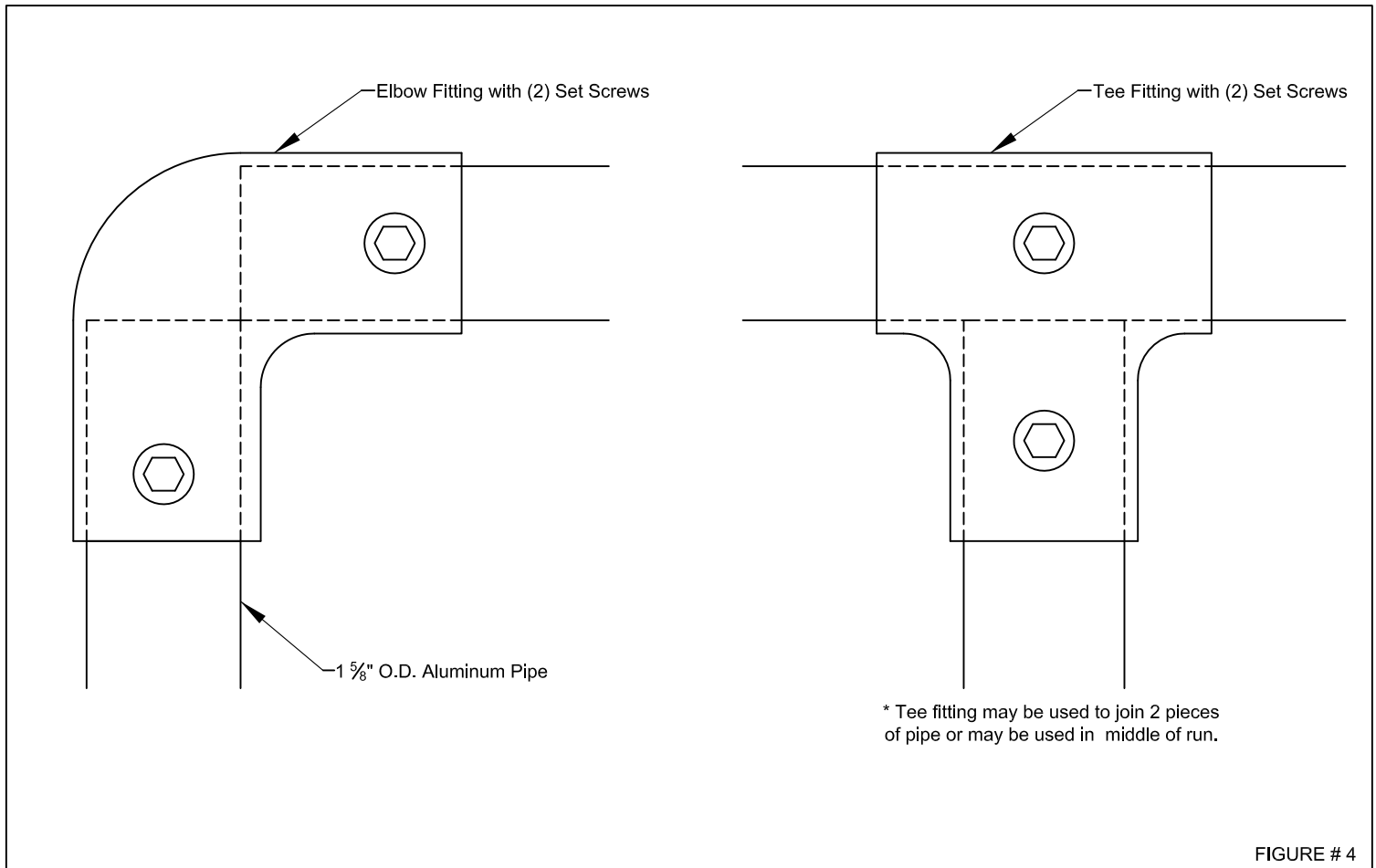


FIGURE # 4

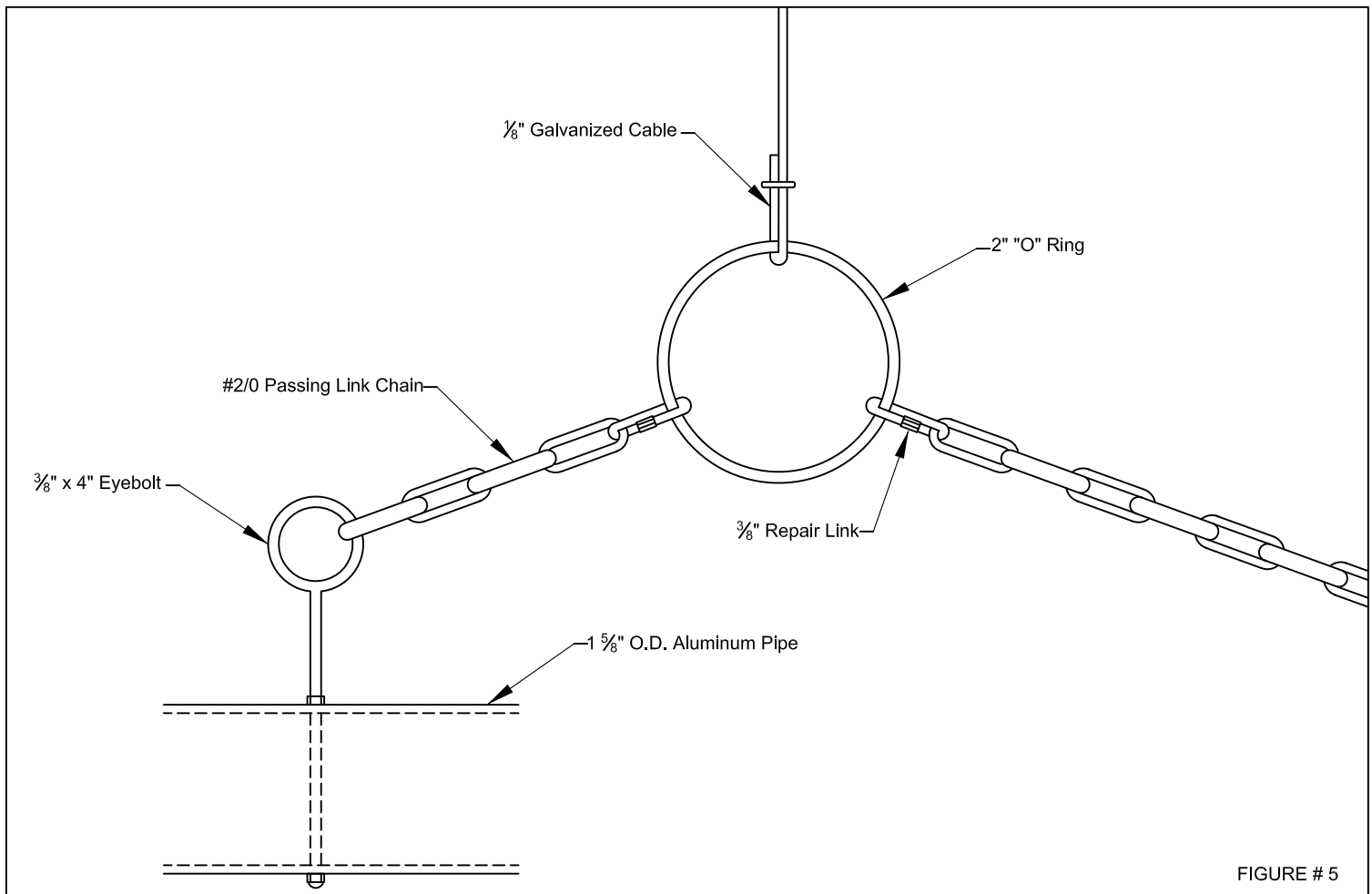


FIGURE # 5