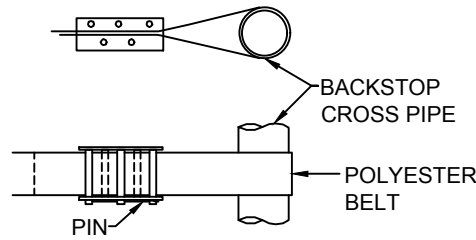
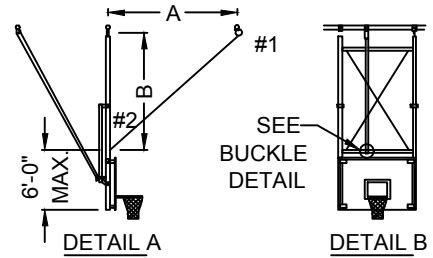


TOP PLATE DETAIL



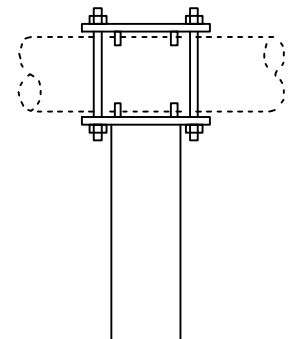
BUCKLE DETAIL



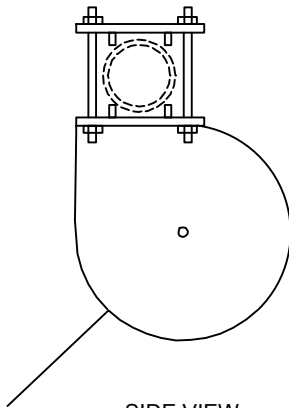
THIS IS A TYPICAL ILLUSTRATION.  
THE PRINCIPLE WOULD BE THE  
SAME FOR ALL DESIGNS & TYPES  
OF BACKSTOPS

FOR ATTACHMENT TO BACKSTOP FRAME, REMOVE PIN FROM BUCKLE AND REMOVE THE OUTER RETAINER. PLACE THE BELT AROUND THE BACKSTOP CROSS PIPE OR OTHER AVAILABLE MEMBER, DEPENDING ON THE TYPE OF BACKSTOP. RETURN LOOSE END OF BELT BACK ACROSS BUCKLE. LEAVE SUFFICIENT OVERAGE TO CLEAR BUCKLE. REPLACE OUTER RETAINER AND PIN. SNUG BUCKLE TO CROSS PIPE.

3 1/2" SUPPORT PIPE MAY BE TURNED EITHER DIRECTION



FRONT VIEW



SIDE VIEW

THE BA955 SAF-LOK SHALL BE COMPLETELY AUTOMATIC MECHANISM WHICH OPERATES ON THE PRINCIPLE OF INERTIA, SIMILAR TO AUTOMOBILE SAFETY BELTS, WITH A 2 INCH WIDE POLYESTER STRAP CAPABLE OF HOLDING A LOAD OF 6000 POUNDS. THE BA955 SAF-LOK AUTOMATICALLY ENGAGES TO LOCK THE BASKETBALL BACKSTOP IN POSITION AT ANYTIME, DUE TO A SUDDEN SURGE OF SPEED CREATED BY CABLE BREAKAGE OR OTHER PARTS FAILURE. FACTORY TESTED AT 1000 POUNDS OF FREE FALL THRUST. THE BA955 SAF-LOK HAS AN AUTOMATIC RESET FEATURE, THUS ELIMINATING THE NEED FOR MANUAL OR ELECTRIC RESET. A SPECIAL HEAVY DUTY BUCKLE IS INCLUDED FOR THE ATTACHMENT OF THE POLYESTER STRAP TO THE BACKSTOP FRAME.

**NOTES:**

1. INSTALLATION TO BE COMPLETED IN ACCORDANCE WITH MANUFACTURER'S SPECIFICATIONS.
2. DO NOT SCALE DRAWING.



## PRODUCT SPECIFICATION

BA955: SAF-LOK

REVISED 8/1/17