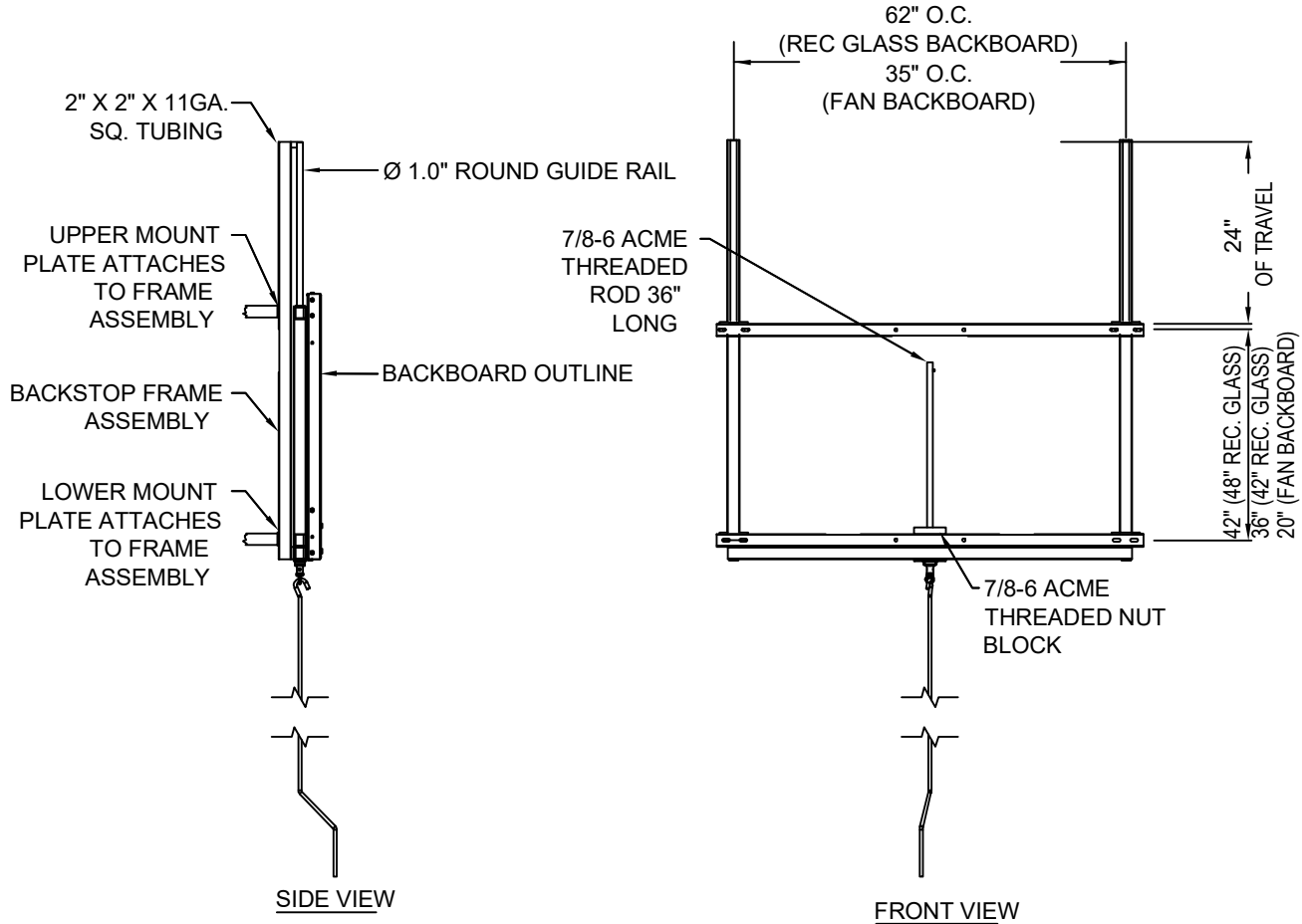
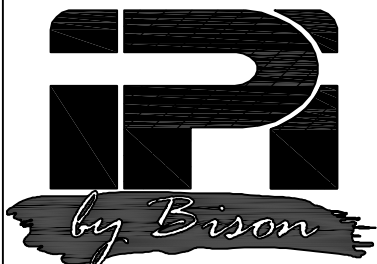


NOTES:

1. INSTALLATION TO BE COMPLETED IN ACCORDANCE WITH MANUFACTURER'S SPECIFICATIONS.
2. DO NOT SCALE DRAWINGS.
3. SELECT BA980F FOR TYPICAL FAN BACKBOARDS WITH 35" X 20" MOUNTING  
SELECT BA980RS FOR TYPICAL 42" TALL RECTANGLE BACKBOARD WITH 36" X 62" MOUNTING  
SELECT BA980RT FOR TYPICAL 48" TALL RECTANGLE BACKBOARD WITH 42" X 62" MOUNTING



Welded and preassembled structure shall mount directly between the ceiling or wall suspended basketball structure and the backboard to allow manual rim height adjustment from 8' to official 10' height. Height adjustment shall be by means of a hand crank activating a 7/8" x 6 TPI ACME lead screw and nut assembly. Hand crank shall be operated from the playing surface by one person. The welded structure shall ride up and down on two 1" diameter parallel chrome plated steel rods near the outer edges of the assembly. Rods shall pass through bronze self lubricating bushings that shall serve to maximize smooth operation and stability. Installation of manual height adjuster shall move the face of the backboard 4.25" closer to the free-throw line. All unplated steel parts shall be powder coated silver. Height adjusters shall carry a five-year limited warranty, and weigh 110# (BA980F), 160# (BA980RS), and 168# (BA980RT).



## PRODUCT SPECIFICATION

BA980F/BA980RS/BA980RT: MANUAL GOAL HEIGHT ADJUSTERS

REVISED 3/28/23 L.M.